



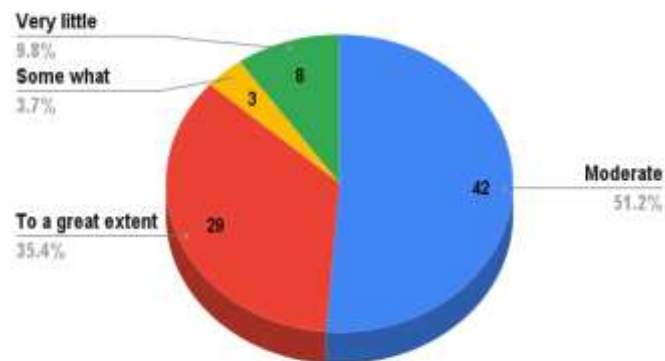
Swargiya Chandra Singh Shahi Government Post Graduate College Kapkote (Bageshwar)

Feedback 2018-2019

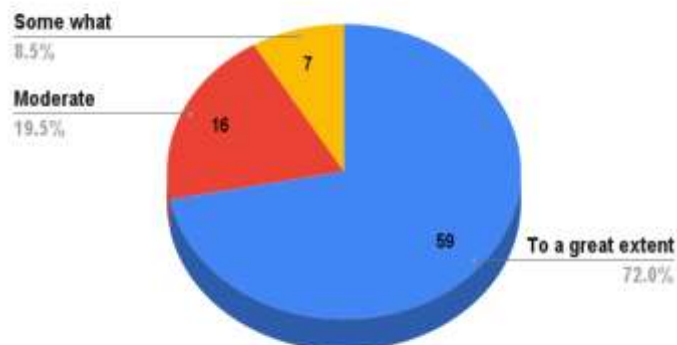
S.No.	Name of Feedback	Date	Mode of feedback
1	Students' Feedback on curriculum	December 2018	Offline Feedback form
2	Parents' Feedback	December 2018	Offline Feedback form
3	Alumni' Feedback	December 2018	Offline Feedback form
4	Teachers' Feedback	December 2018	Offline Feedback form

Student Feedback Analysis Report Academic Year 2018-19

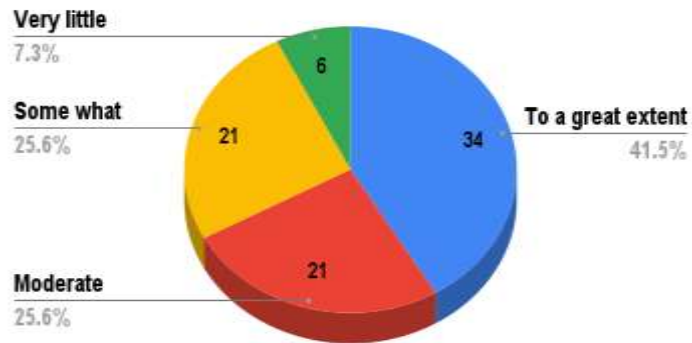
1. Rate How challenging was the syllabus offered by the course



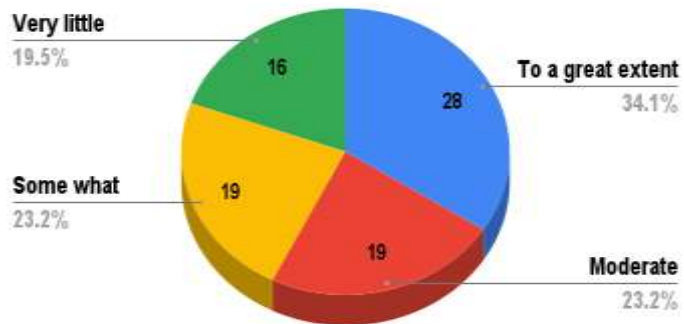
2. Was the entire syllabus is completed in time



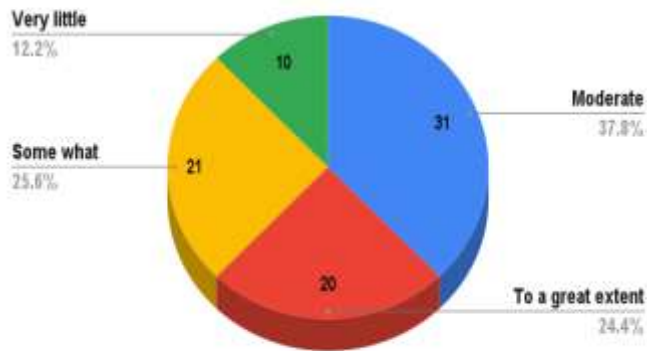
3. The Course is relevant and enhance your knowledge and skills



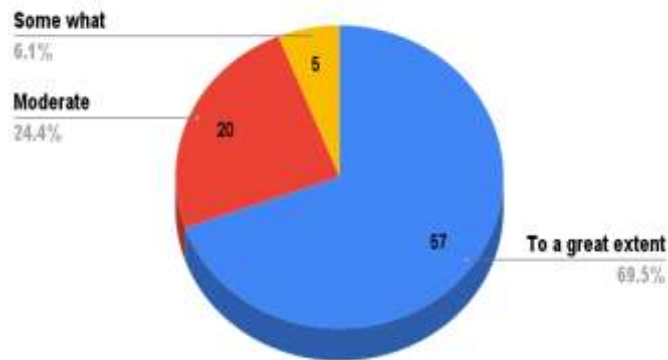
4. The curriculum is designed so as to enhance your employability



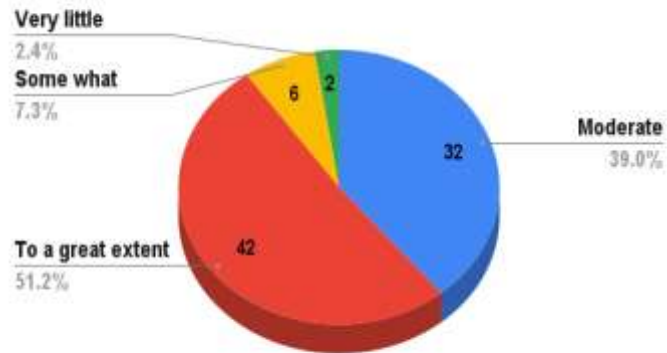
5. Modern teaching aids, power point presentations, web-resources, multi-media, e-content etc. are used by most of the teachers while teaching



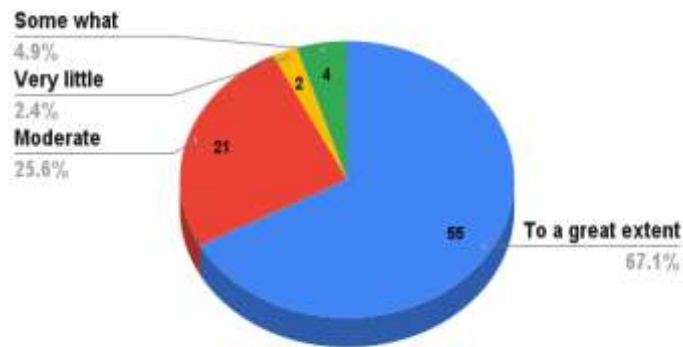
6. The teachers guide the students for overall personality development of the student



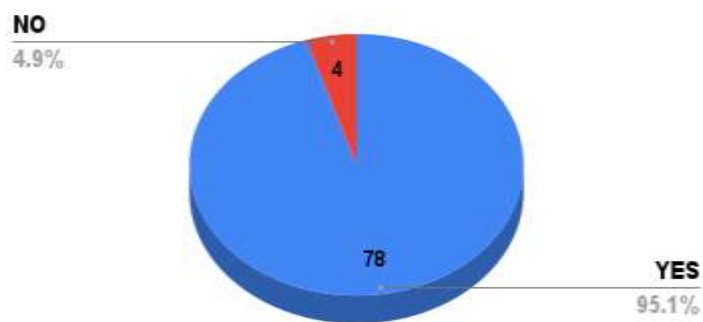
7. The internal assessment and evaluation process is fair and unbiased



8. The teachers encourage the students to participate in extra-curricular, co-curricular activities



9. The teachers keep the students updated about the latest developments in the subject/area of knowledge



Analysis of Students' Feedback

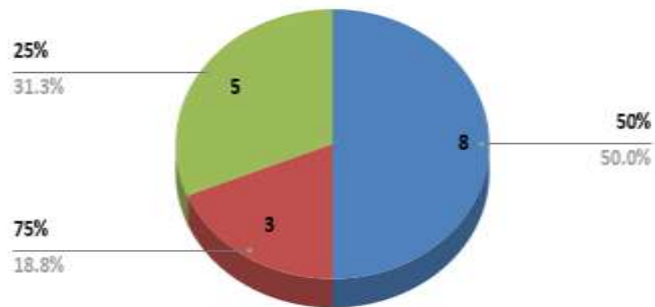
S.N	Question	Responses			
		Too a great extent	Moderate	Very Little	Some What
1	Rate How challenging was the syllabus offered by the course	35.4%	51.2%	9.8%	3.7%
2	Was the entire syllabus is completed in time	72.0%	19.5%	0	8.5%
3	The Course is relevant and enhance your knowledge and skills	41.5%	25.6%	7.3%	25.6%
4	The curriculum is designed so as to enhance your employability	34.1%	23.2%	19.5%	23.2%
5	Modern teaching, power point presentation resources, multi-media, e-content etc. are used by most of the teachers while teaching	24.4%	37.8%	12.2%	25.6%
6	The teachers guide the students for overall personality development of the student	69.5%	24.4%	0	6.1%
7	The internal assessment and evaluation process is fair and unbiased	51.2%	39.0%	2.4%	7.3%
8	The teachers encourage the students to participate in extra-curricular, co-curricular activities	67.1%	25.6%	2.4%	4.9%
9	The teachers keep the students updated about the latest developments in the subject/area of knowledge.	NO 4.9%		Yes 95.1%	

Suggestions/ demand by students:

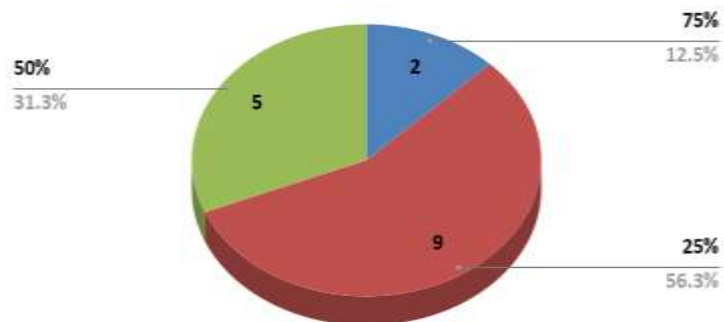
- 1- To conduct career counselling session for B.Ed. and competitive examinations
- 2- Lack of furniture

Parents Feedback Session : 2018-19

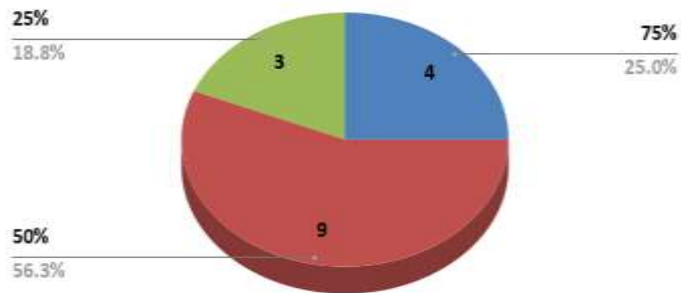
1. How far do you think that the course offered in the college is relevant to the needs of the day.



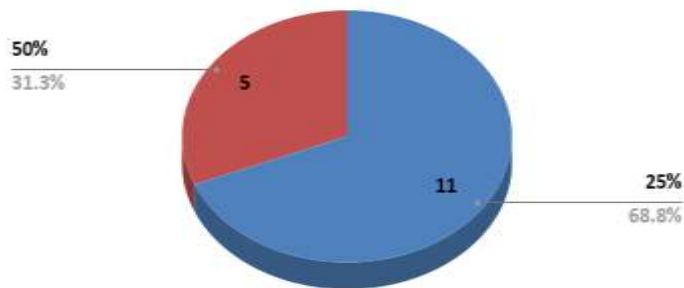
2. How far do you think that the course make the students employable



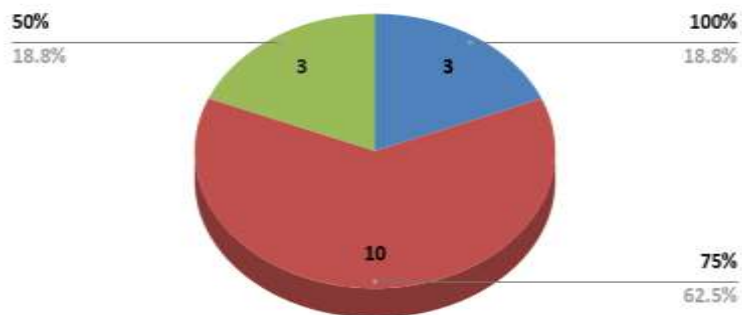
3. How far do you think that the course added value to professional skills and life skills



4. How far are you satisfied with the facilities and support system of college



5. How far do you think that the college contributes to social upliftment of the community



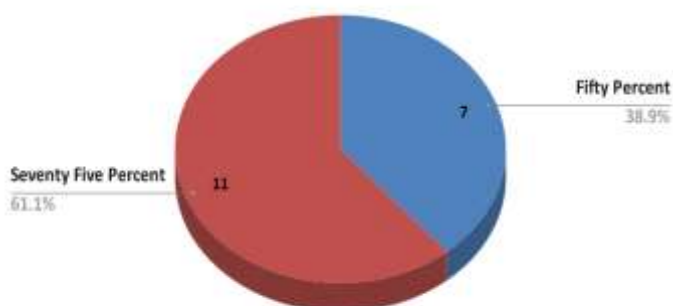
S.No	Question	Responses			
		100%	75%	50%	25%
1	How far do you think that course offered in the college is relevant to the needs of day	0	18.8%	50.0%	31.3%
2	How far do think that they course make students employable	0	12.5%	31.3%	56.3%
3	How far do you think that they course added value to professional skills and life skills	0	25.0%	56.3%	18.8%
4	How far are you satisfied with the facilities and support system of college	0	0	31.3%	68.8%
5	How far do you think that they college contributes to social Upliftment of community	18.8%	62.8%	18.8%	0

Suggestion by parents:

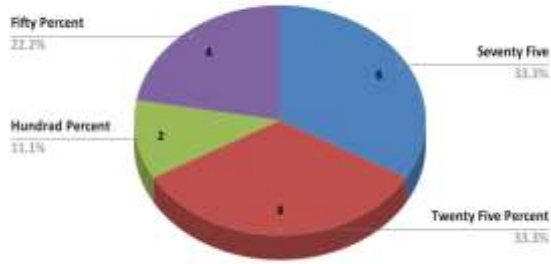
- 1- Purchase of books for library**

Analysis of Alumni Feedback Session 2018-19

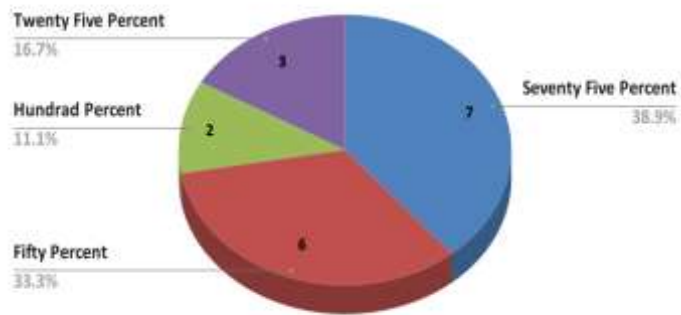
1. How far do you think that the course offered in the college is relevant to the needs of the day.



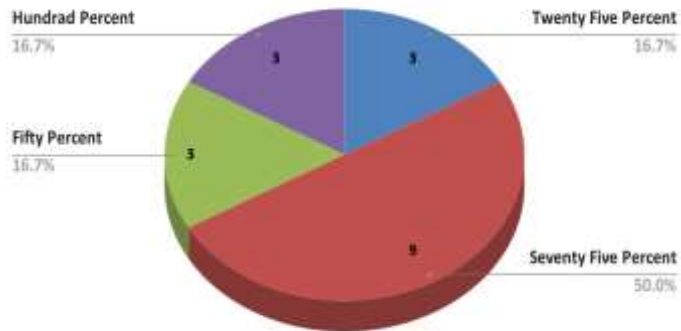
2. How far do you think that the course make the students employable



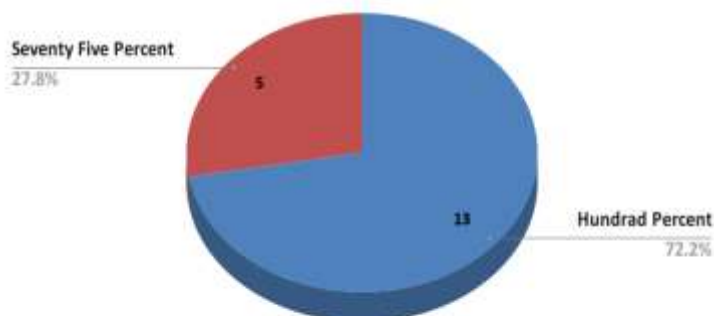
3. How far do you think that the course added value to professional skills and life skills



4. How far are you satisfied with the facilities and support system of college



5. How far do you think that the college contributes to social upliftment of the community



S.No.	Question	Responses			
		100%	75%	50%	25%
1	How far do you think that course offered in the college is relevant to the needs of day	0	61.1%	38.9%	0
2	How far do think that they course make students employable	11.1%	33.3%	22.2%	33.3%
3	How far do you think that they course added value to professional skills and life skills	11.1%	38.9%	33.3%	16.7%
4	How far are you satisfied with the facilities and support system of college	16.7%	50.0%	16.7%	16.7%
5	How far do you think that they college contributes to social Upliftment of community	72.2%	27.8%	0	0

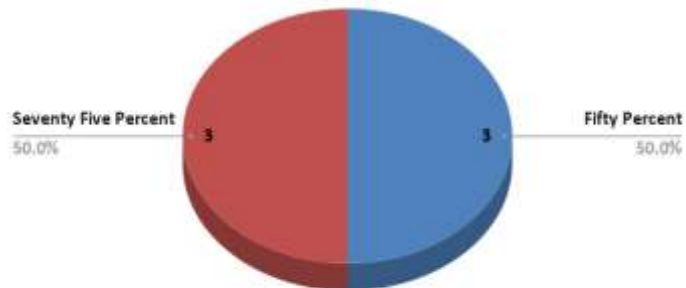
Suggestion by Alumni-

- 1- Requirement of computer room for students**

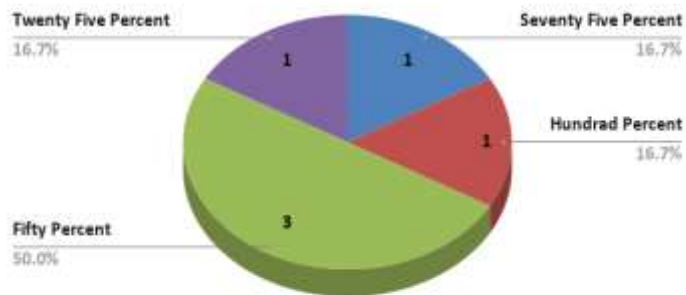
Teacher's Feedback Analysis Report

Academic Year 2018-19

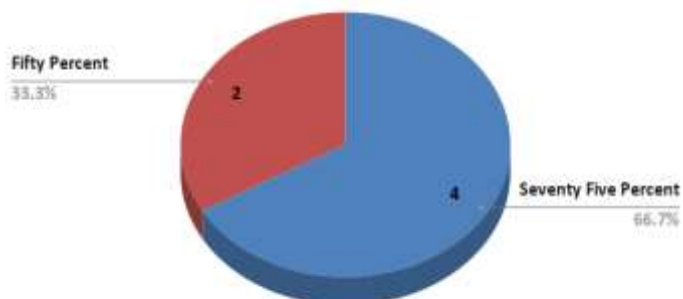
1. How far do you think that the course offered in the college is relevant to the needs of the day.



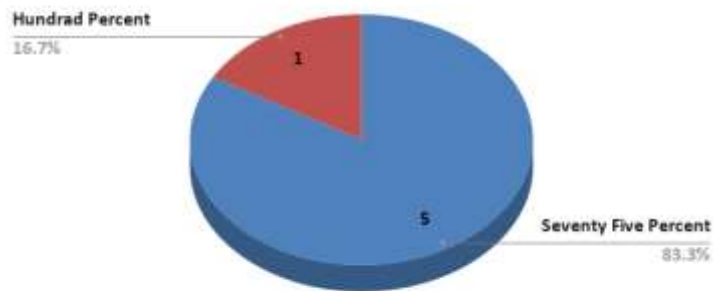
2. How far do you think that the course make the students employable.



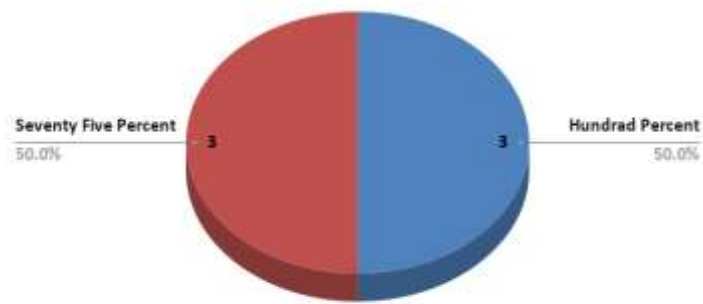
3. How far do you think that the course added value to professional skills and life skills.



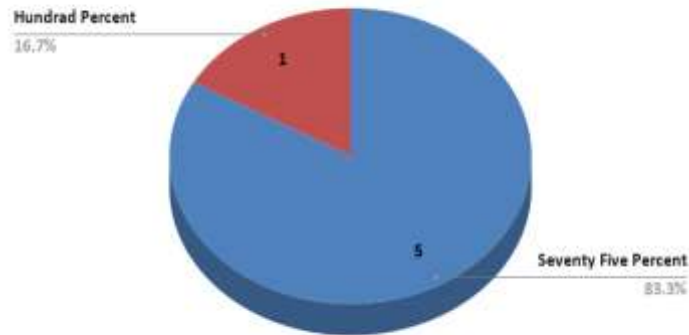
4. How far are you satisfied with the facilities and support system of college.



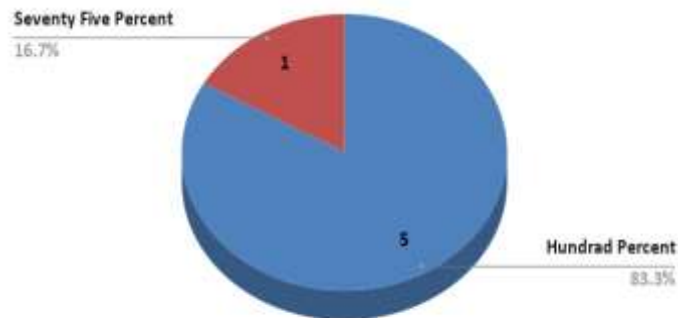
5. How far do you think that the college contributes to social upliftment of the community.



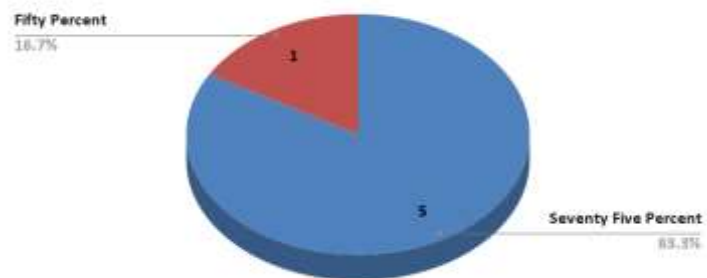
6. Are aims & objectives of curriculum well defined?



7. Do teachers get adequate time for the completion of syllabus during the semester?



8. Is curriculum suitable for both slow and fast learners?



S.No.	Question	Responses			
		100%	75%	50%	25%
1	How far do you think that course offered in the college is relevant to the needs of day	0	50.0%	50.0%	0
2	How far do think that the course make students employable	16.7%	16.7%	50.0%	16.7%
3	How far do you think that the course added value to professional skills and life skills	0	66.7%	33.3%	0
4	How far are you satisfied with the facilities and support system of college	16.7%	83.3%	0	0
5	How far do you think that the college contributes to social upliftment of community	50.0%	50.0%	0	0
6	Are aims and objectives of curriculum well defined?	16.7%	83.3%	0	0
7	Do teachers get adequate time for the completion of syllabus during semester?	16.7%	83.3%	0	0
8	Is curriculum suitable for both slow and fast learners?	16.7%	83.3%	0	0

Suggestions by teachers-

1- Requirement of smart boards for teaching

PRINCIPAL