



Swargiya Chandra Singh Shahi Government Post Graduate College Kapkote (Bageshwar)

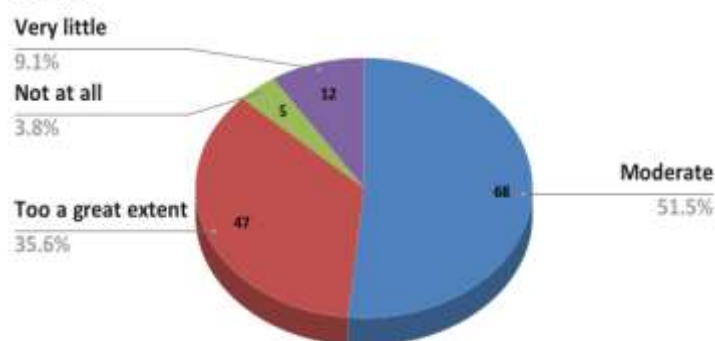
Feedback Report 2020-2021

S.No.	Name of Feedback	Date	Mode of Feedback
1	Students' Feedback on curriculum	October 2021	Offline Feedback form
2	Parents' Feedback on curriculum	October 2021	Offline Feedback form
3	Alumni' Feedback on curriculum	October 2021	Offline Feedback form
4	Teachers' Feedback on curriculum	August 2021	Offline Feedback form

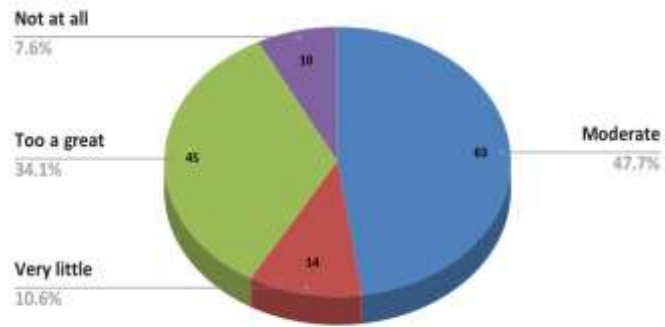
***Note: Due to COVID lockdown the feedback collection for the session 2020-2021 was delayed.**

Student Feedback Analysis Report Academic Year 2020-21

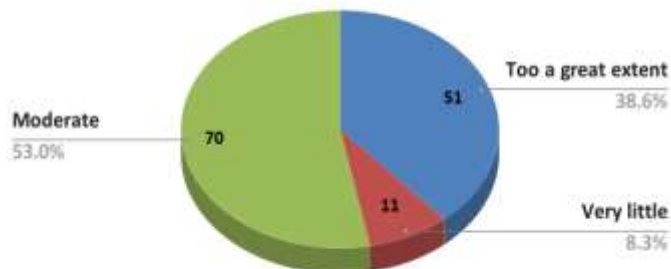
1. Rate How challenging was the syllabus offered by the course



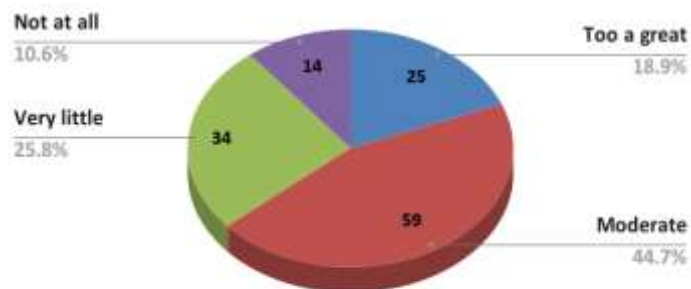
2. Was the entire syllabus is completed in time



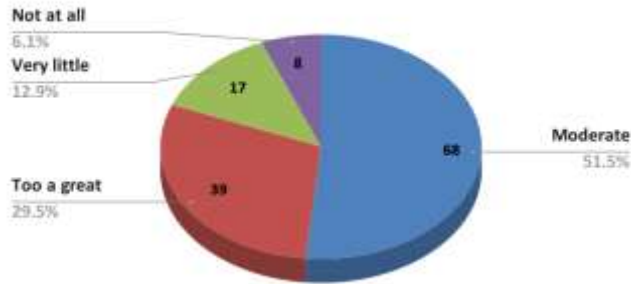
3. The Course is relevant and enhance your knowledge and skills



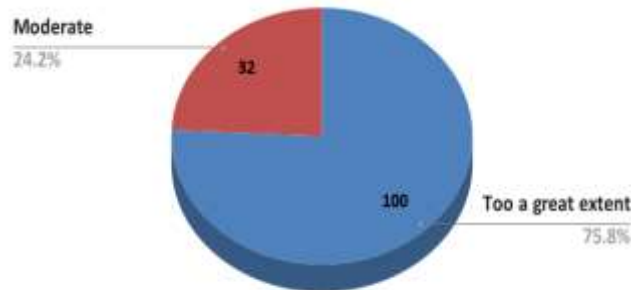
4. The curriculum is designed so as to enhance your employability



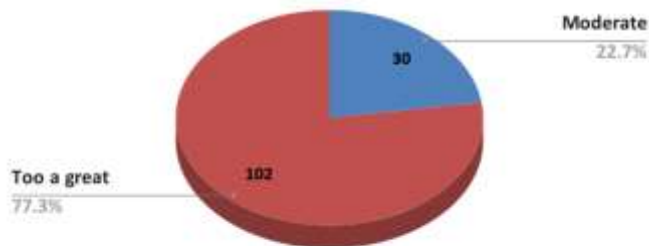
5. Modern teaching aids, power point presentations, web-resources, multi-media, e-content etc. are used by most of the teachers while teaching



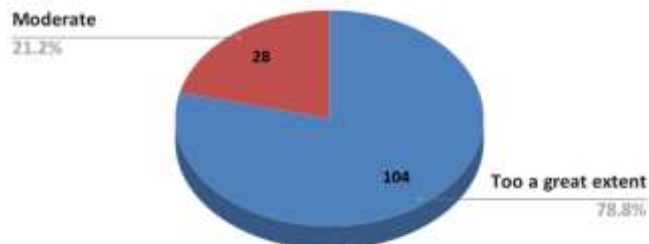
6. The teachers guide the students for overall personality development of the student



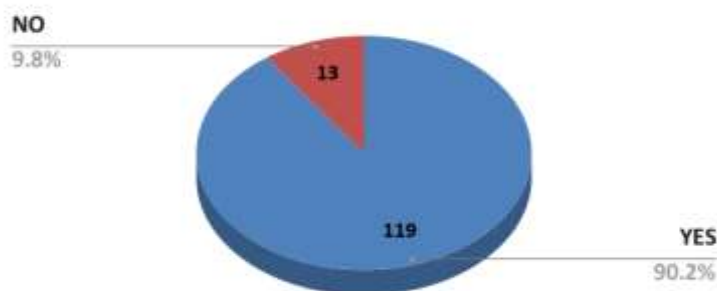
7. The internal assessment and evaluation process is fair and unbiased



8. The teachers encourage the students to participate in extra-curricular, co-curricular activities



9. The teachers keep the students updated about the latest developments in the subject/area of knowledge.

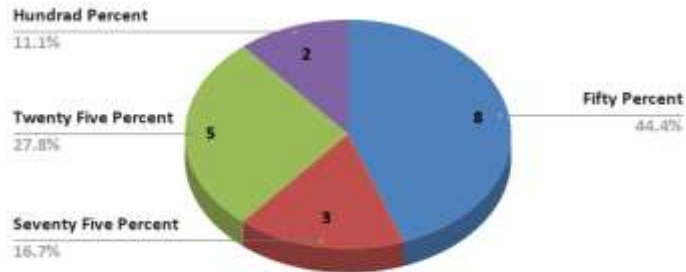


S.No.	Question	Responses			
		Too a great extent	Moderate	Very Little	Not at all
1	Rate How challenging was the syllabus offered by the course	35.6%	51.5%	9.1%	3.8%
2	Was the entire syllabus is completed in time	34.1%	47.7%	10.6%	7.6%
3	The Course is relevant and enhance your knowledge and skills	38.6%	53.0%	8.3%	0
4	The curriculum is designed so as to enhance your employability	18.9%	44.7%	25.8%	10.6%
5	Modern teaching aids, power point presentations, web-resources, multi-media, e-content etc. are used by most of the teachers while teaching	29.5%	51.5%	12.9%	6.1%
6	The teachers guide the students for overall personality development of the student	75.8%	24.2%	0	0
7	The internal assessment and evaluation process is fair and unbiased	77.3%	22.7%	0	0
8	The teachers encourage the students to participate in extra-curricular, co-curricular activities	78.8%	21.2%	0	0
9	The teachers keep the students updated about the latest developments in the subject/area of knowledge.	YES 90.2%		No 9.8%	

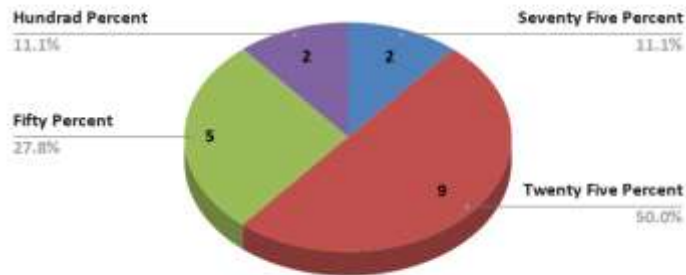
Suggestion by students- Nil

Parents Feedback Session : 2020-21

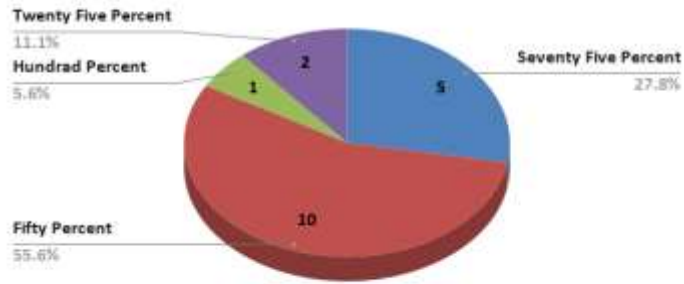
1. How far do you think that the course offered in the college is relevant to the needs of the day.



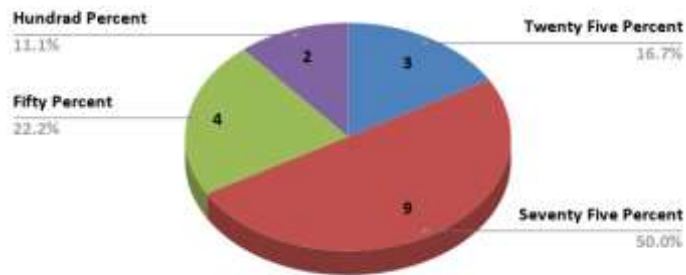
2. How far do you think that the course make the students employable.



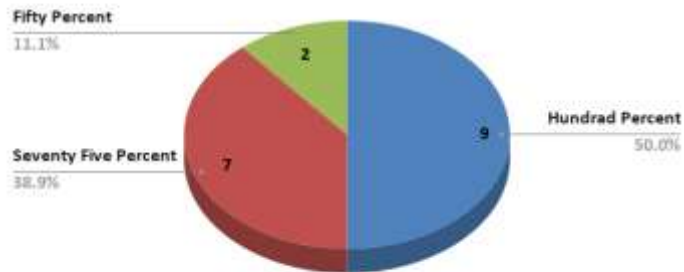
3. How far do you think that the course added value to professional skills and life skills.



4. How far are you satisfied with the facilities and support system of college.



5. How far do you think that the college contributes to social upliftment of the community.

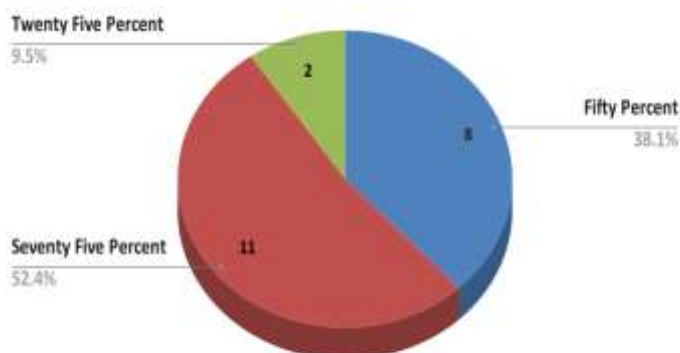


S.No.	Question	Responses			
		100%	75%	50%	25%
1	How far do you think that course offered in the college is relevant to the needs of day	11.1%	16.7%	44.4%	27.8%
2	How far do think that the course makes students employable	11.1%	11.1%	27.8%	50.0%
3	How far do you think that the course added value to professional skills and life skills	5.6%	27.8%	55.6%	11.1%
4	How far are you satisfied with the facilities and support system of college	11.1%	50.0%	22.2%	16.7%
5	How far do you think that the college contributes to social upliftment of community	50.0%	38.9%	11.1%	0

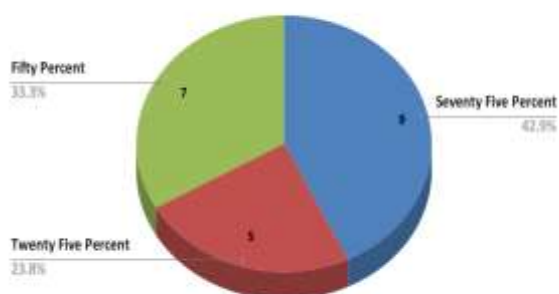
Suggestions by parents- Nil

Alumni Feedback Session 2020-21

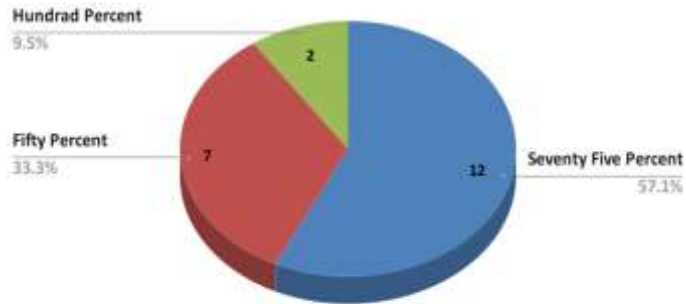
1. How far do you think that the course offered in the college is relevant to the needs of the day.



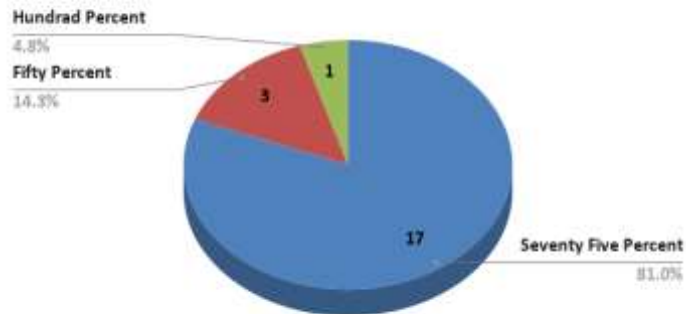
2. How far do you think that the course make the students employable.



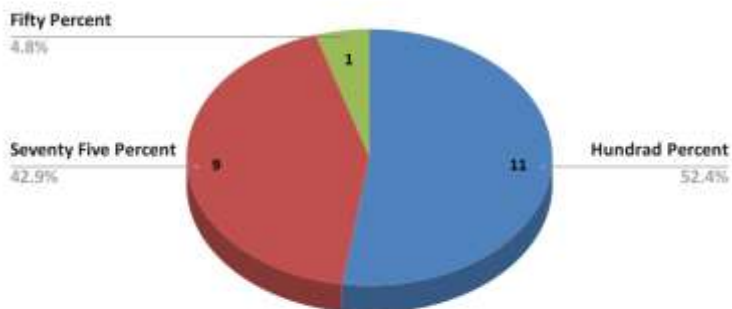
3. How far do you think that the course added value to professional skills and life skills.



4. How far are you satisfied with the facilities and support system of college.



5. How far do you think that the college contributes to social upliftment of the community



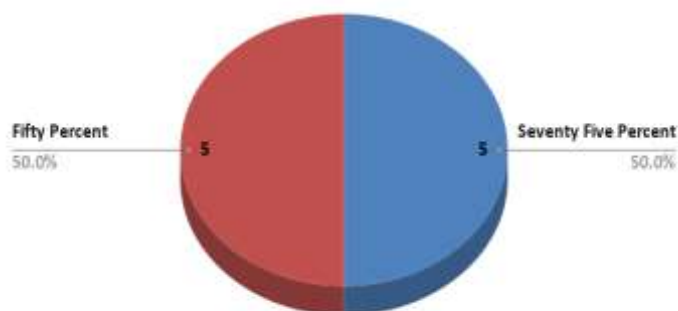
S.No.	Question	Responses			
		100%	75%	50%	25%
1	How far do you think that course offered in the college is relevant to the needs of day	0	52.4%	38.1%	9.5%
2	How far do think that they course make students employable	0	42.9%	33.3%	23.8%
3	How far do you think that they course added value to professional skills and life skills	9.5%	57.1%	33.3%	0
4	How far are you satisfied with the facilities and support system of college	4.8%	81.0%	14.3%	0
5	How far do you think that they college contributes to social Upliftment of community	52.4%	42.9%	4.8%	0

Suggestion- Nil

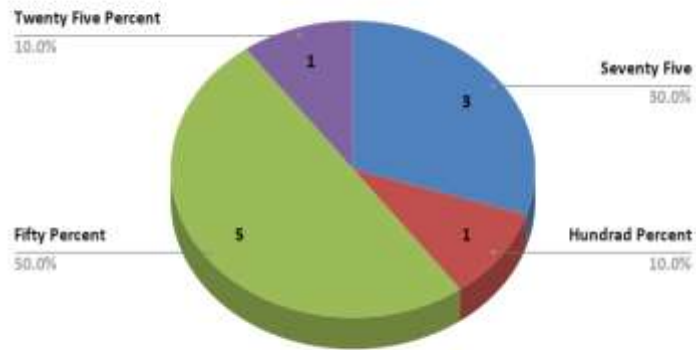
Teachers' Feedback

2020-2021

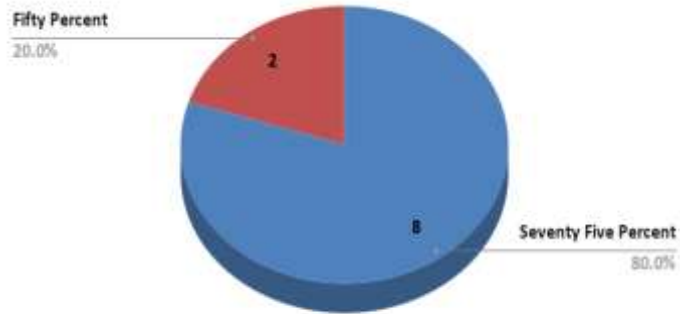
1. How far do you think that the course offered in the college is relevant to the needs of the day.



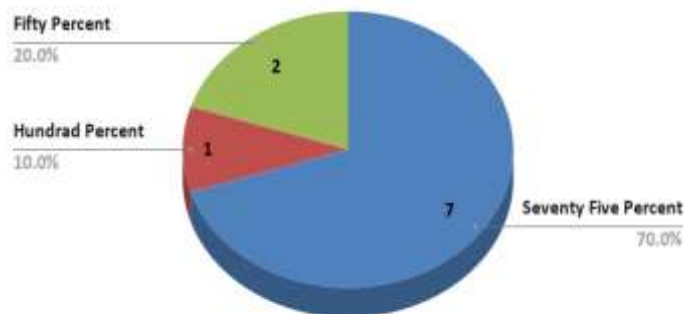
2. How far do you think that the course make the students employable.



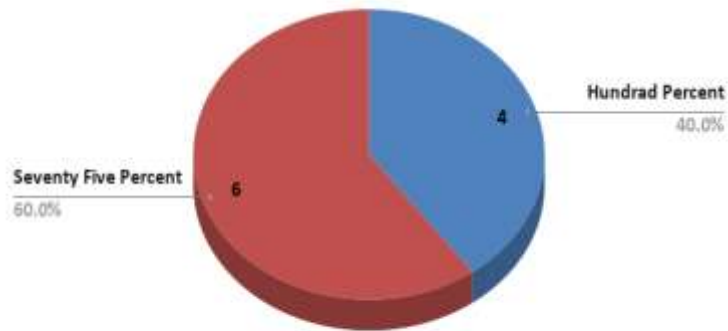
3. How far do you think that the course added value to professional skills and life skills.



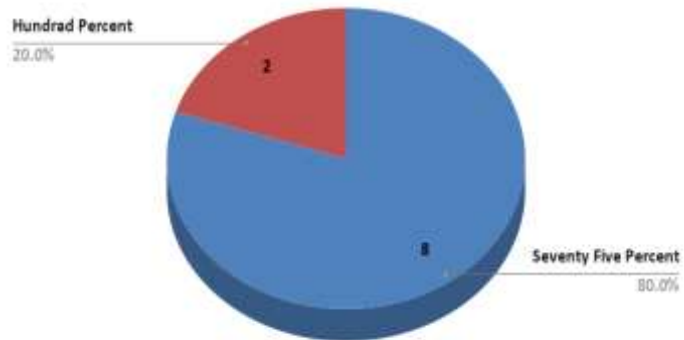
4. How far are you satisfied with the facilities and support system of college.



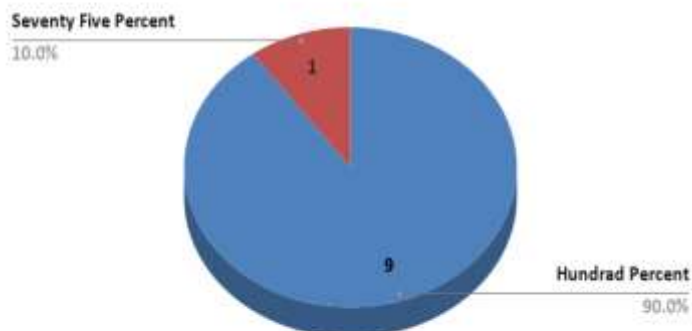
5. How far do you think that the college contributes to social upliftment of the community.



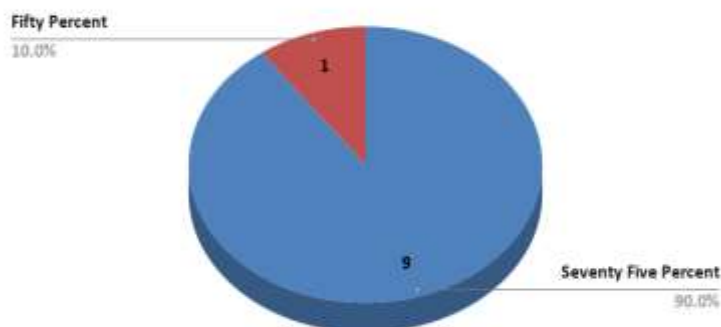
6. Are aims & objectives of curriculum well defined?



7. Do teachers get adequate time for the completion of syllabus during the semester?



8. Is curriculum suitable for both slow and fast learners?



S.No.	Question	Responses			
		100%	75%	50%	25%
1	How far do you think that course offered in the college is relevant to the needs of day		50%	50%	0
2	How far do think that the course make students employable	10%	30%	50%	10%
3	How far do you think that the course added value to professional skills and life skills	0	80%	20%	0
4	How far are you satisfied with the facilities and support system of college	10%	70%	20%	
5	How far do you think that the college contributes to social upliftment of community	40%	60%	0	0
6	Are aims and objectives of curriculum well defined?	20%	80%	0	0

7	Do teachers get adequate time for the completion of syllabus during semester?	90%	10%	0	0
8	Is curriculum suitable for both slow and fast learners?	0	90%	10%	0

Suggestions-

- 1- Requirement of books for library**

PRINCIPAL