



Swargiya Chandra Singh Shahi Government Post Graduate College Kapkote (Bageshwar)

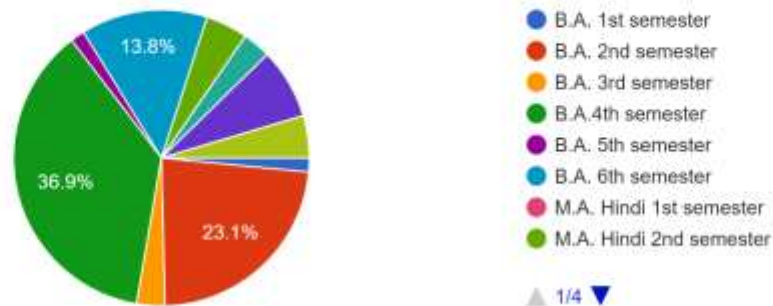
Feedback Analysis 2023-2024

S.No.	Name of Feedback	Date	Mode of Feedback
1	Students' Feedback on curriculum	14 th May to 3 rd June 2024	Online Feedback Form
2	Teachers' Feedback on curriculum	15 th May to 11 th June 2024	Online Feedback Form
3	Parents' Feedback on curriculum	25 th April to 29 th May 2024	Online Feedback Form
4	Alumni' Feedback on curriculum	25 th April to 29 th May 2024	Online Feedback Form

Student Feedback Analysis Report

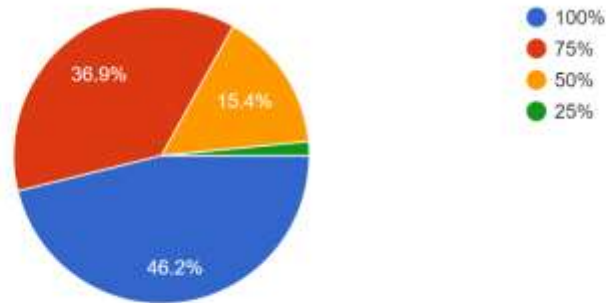
Academic Year 2023-2024

Course
65 responses



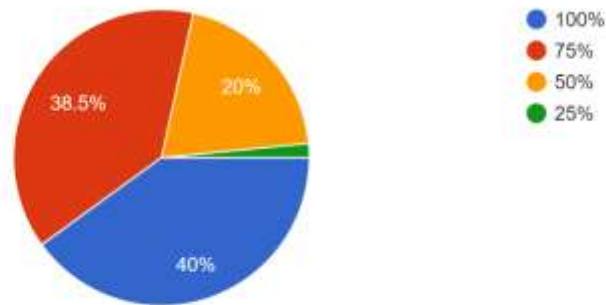
1- Are Programme and Course objectives clear to you? क्या कार्यक्रम और पाठ्यक्रम के उद्देश्य आपको स्पष्ट हैं?

65 responses



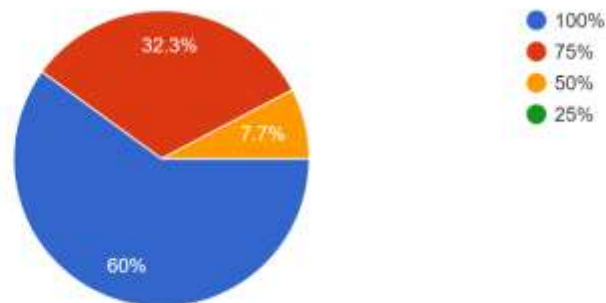
2-Course content covers all the aspects of the programme?पाठ्यक्रम सामग्री कार्यक्रम के सभी पहलुओं को शामिल करती है?

65 responses



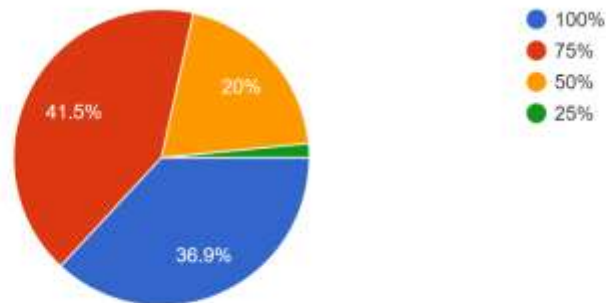
3-The Course is relevant and enhance your knowledge and skills/ पाठ्यक्रम प्रासंगिक है और आपका ज्ञान एवं कौशल को बढ़ाता है

65 responses



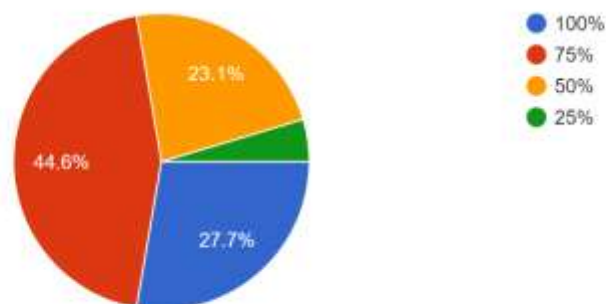
4-The curriculum is designed so as to enhance your employability/ पाठ्यक्रम को आपकी रोजगार क्षमता को बढ़ाने के लिए डिज़ाइन किया गया है

65 responses



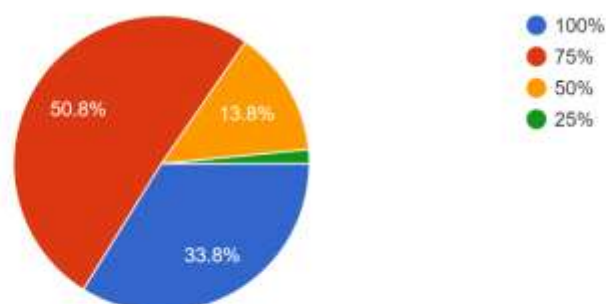
5-Modern teaching aids, power point presentations, web-resources, multi-media, e-content etc. are used by most of the teachers while teaching/आधुनिक...ि का उपयोग अधिकांश शिक्षक शिक्षण के दौरान करते हैं

65 responses



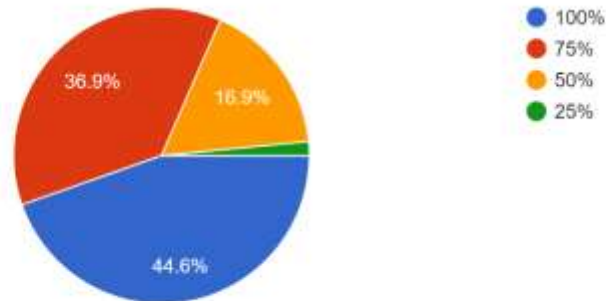
6- Examinations (External/ Internal) are within the course content, परीक्षाएं (बाहरी/आंतरिक) पाठ्यक्रम सामग्री के अंतर्गत होती हैं?

65 responses



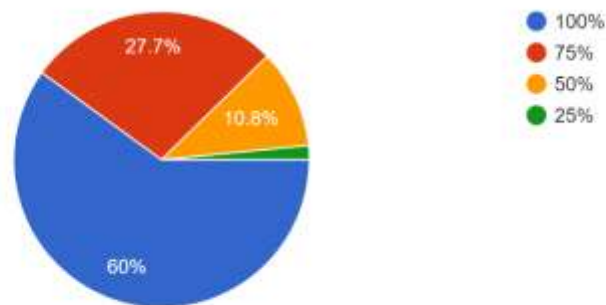
7- The internal assessment and evaluation process is fair and unbiased/आंतरिक मूल्यांकन और मूल्यांकन प्रक्रिया निष्पक्ष और निष्पक्ष है

65 responses



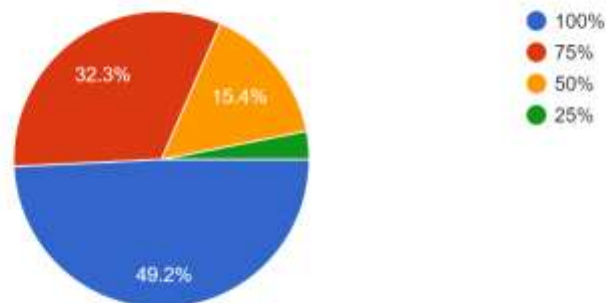
8- Lectures/ Assignment/ Practical help to understand the course content, व्याख्यान/असाइनमेंट/प्रेक्टिकल पाठ्यक्रम सामग्री को समझने में मदद करते हैं

65 responses



Was the entire syllabus is completed in time/ क्या आपका पाठ्यक्रम पूर्ण हुआ ?

65 responses



		Total Responses 65			
S.No.	Question	100%	75%	50%	25%
1	Are Programme and Course objectives clear to you?	46.2%	36.9%	15.4%	1.5%
2	Course content covers all the aspects of the programme?	40%	38.5%	20%	1.5%
3	The Course is relevant and enhance your knowledge and skills	60%	32.3%	7.7%	0%
4	The curriculum is designed so as to enhance your employability	36.9%	41.5%	20%	1.5%
5	Modern teaching aids, power point presentations, web-resources, multi-media, e-content etc. are used by most of the teachers while teaching	27.7%	44.6%	23.1%	23.1%
6	Examinations (External/ Internal) are within the course content	33.8%	50.8%	13.8%	1.5%
7	The internal assessment and evaluation process is fair and unbiased	44.6%	36.9%	16.9%	1.5%
8	Lectures/ Assignment/ Practical help to understand the course content,	60%	27.7%	10.8%	1.5%
9	Was the entire syllabus completed in time	49.2%	32.3%	15.4%	3.1%

Suggestions:

10- Do you want any changes in the present course, if Yes kindly mention it- Nil

11- Any other suggestion regarding college facilities activities etc

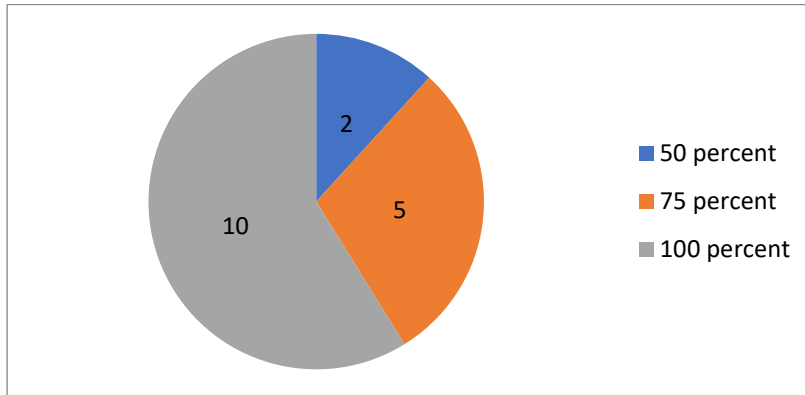
Should focus on personality development of students

Should focus on creative teaching techniques

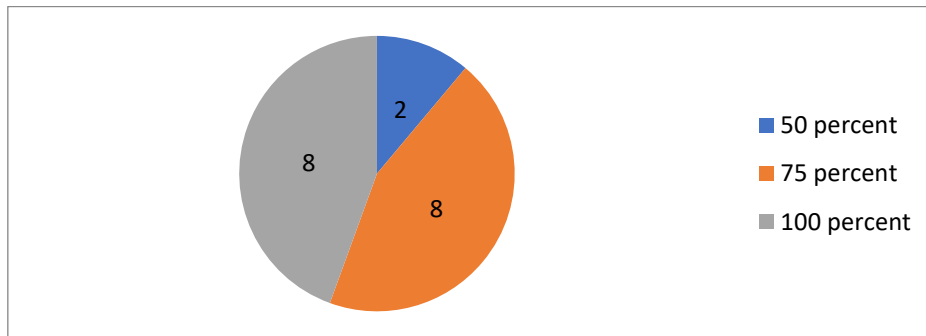
Students should be provided canteen facility.

Teachers' Feedback Analysis Report Session 2023-2024

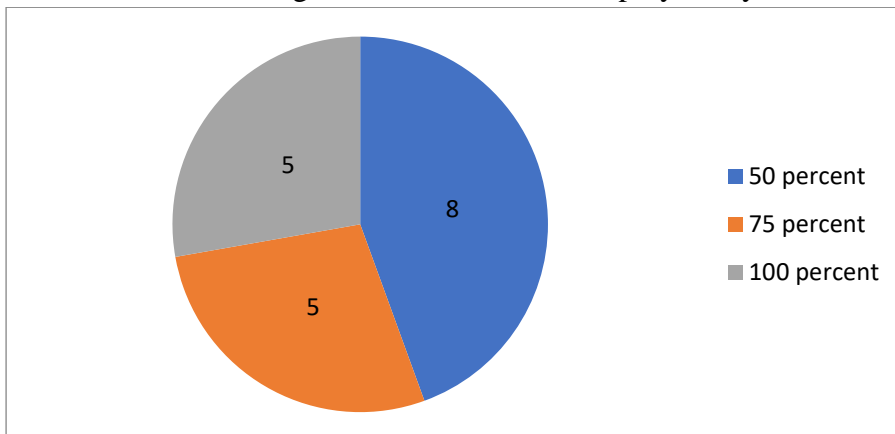
1- Are programme and course objectives clear?



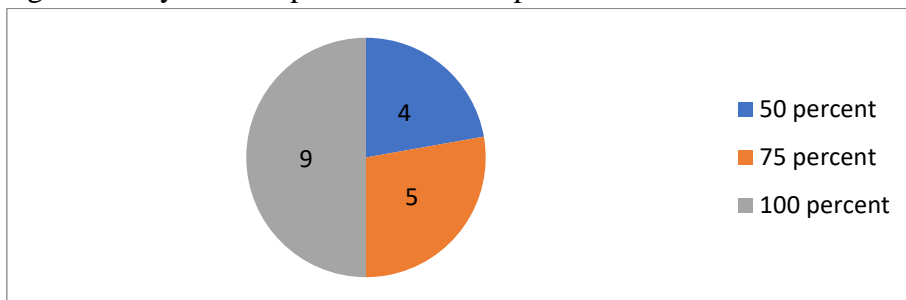
2- Course content covers all the aspects of the programme?



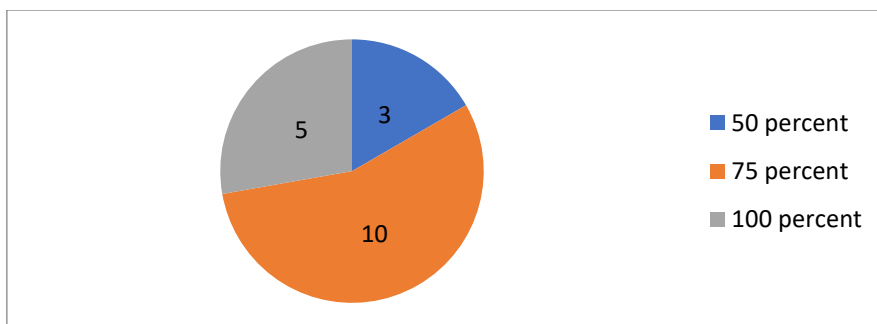
3- The curriculum is designed so as to enhance employability of students?



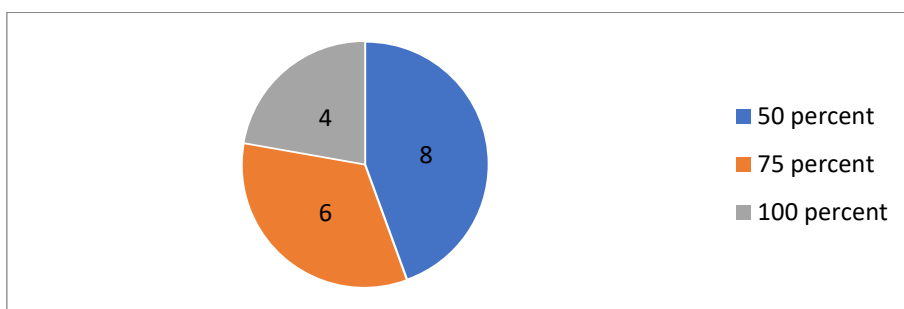
4-Coverage of the syllabus is possible in the stipulated time



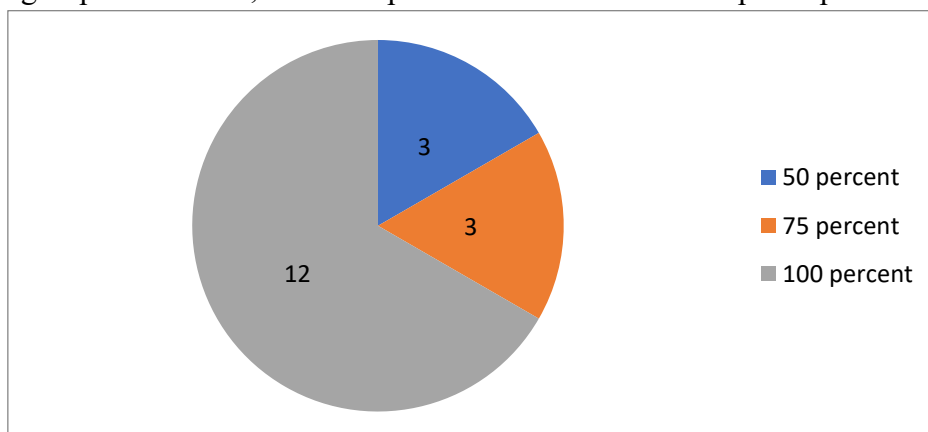
5-The course/syllabi of the subject increase interest, knowledge and perspective in the subject area



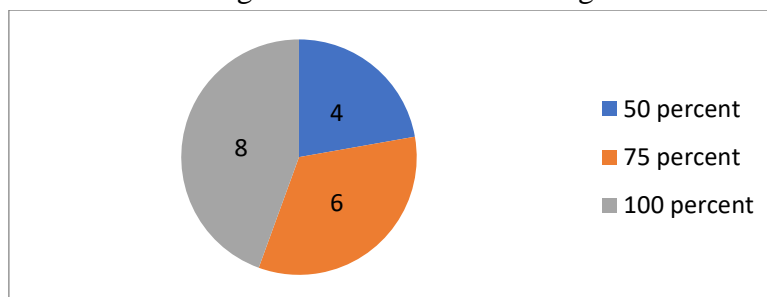
6-Sufficient reference material and books are available in the college library for the topics mentioned in the syllabus



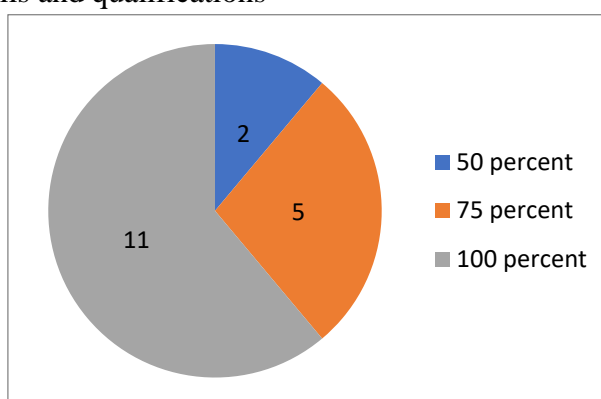
7-The institution has given full freedom to adopt new techniques/ strategies of teaching such as group discussions, seminars presentations and learner's participation



8-The environment in the college is conducive to teaching and research



9-The college provides adequate opportunities and support to faculty members for upgrading their skills and qualifications



S.No.	Question	No. of teachers Responded 18			
		100%	75%	50%	25%
1	Are Programme and Course objectives clear?	10	5	2	0
2	Course content covers all the aspects of the programme?	8	8	2	0
3	The curriculum is designed so as to enhance employability of students?	5	5	8	0
4	Coverage of the syllabus is possible in the stipulated time	9	5	4	0
5	The course/syllabi of the subject increase interest, knowledge and perspective in the subject area	5	10	3	0
6	Sufficient reference material and books are available in the college library for the topics mentioned in the syllabus	4	6	8	0
7	The institution has given full freedom to adopt new techniques/ strategies of teaching such as group discussions, seminars presentations and learner's participation	12	3	3	0

8	The environment in the college is conducive to teaching and research	8	6	4	0
9	The college provides adequate opportunities and support to faculty members for upgrading their skills and qualifications	11	5	2	0

10- Any suggestion regarding course/ curriculum that can be sent to university

एम ए हिंदी का पाठ्यक्रम बहुत विस्तृत है जिस कारण पाठ्यक्रम पूरा करने में कठिनाई आती है।

पाठ्यक्रम में प्रत्येक सेमेस्टर की समयावधि अनुसार बदलाव किया जाना चाहिए।

The University must provide sufficient time between admission and examination for course completion.

In the NEP Syllabus of minor elective in education max. marks are given 50 and no provision of internal assessment but in actual the total paper is of 100 marks including 25 marks of internal assessment. Similarly practical in each semester is given of 50 marks, but in portal we upload marks out of 100. This difference between the syllabus and real situation should be corrected.

A systematic and concise presentation of the subject, sub topics and related materials prescribed for any kind of education or training

The course must be add graphic design and animations skill to enhance knowledge of student.

In the unit Human Values of Environment studies and value education, we should also add some honest army officers like Sam Bahadur.

The syllabus of M.A.(English) should be updated according to present needs of students. The syllabus of B.A. 1 under NEP is very lengthy and does not have different genres of prose.

11- Any suggestion regarding institute facilities/ activities etc

There should be a girls common room.

The total number of available books of minor elective subject in Education in B. A. II and IV semester are very less as compared to the total registered students. More book should be provided in the library for the students.

Transforming the teaching learning process

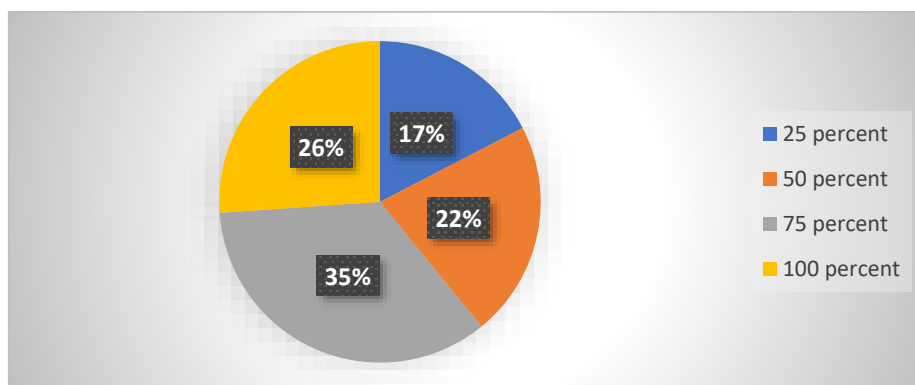
Institute should provide per day some hours for research

As soon as B.Sc. is started, such instruments should be installed in the college so that research work in science can also be done.

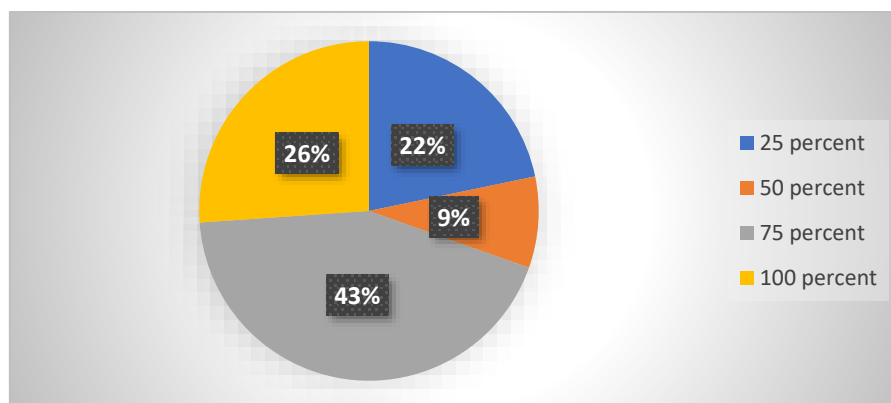
Work distribution should be proper

Alumni Feedback report: Session- (2023-24)

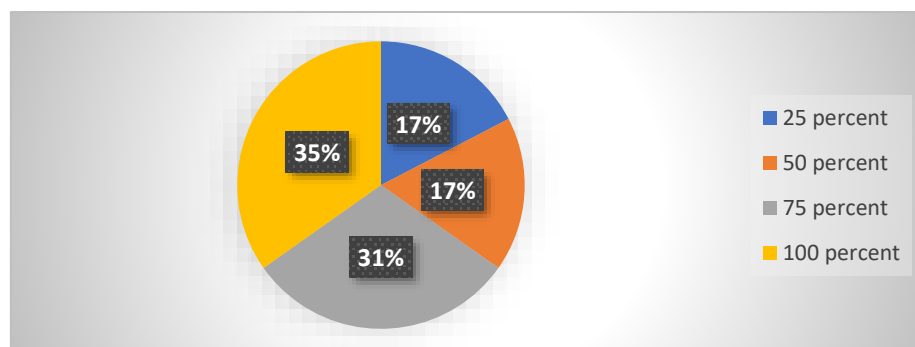
- 1- How far do you think that the course offered in the college is relevant to the needs of the day.



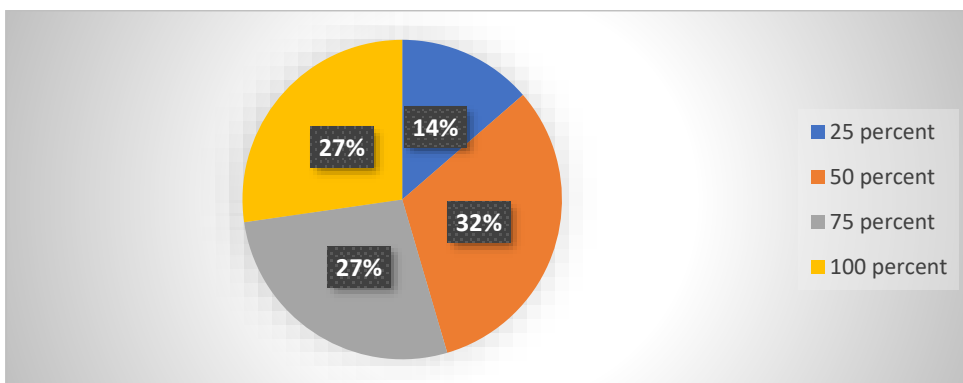
- 2- How far do you think that the course makes the students employable



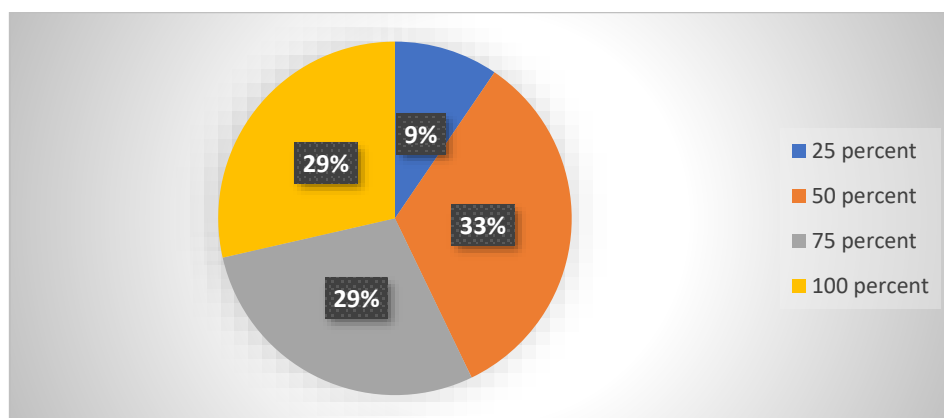
- 3- How far do you think that the course added value to your professional skills and life skills



4- How far are you satisfied with the facilities and support system of college



5- How far do you think that the college contributes to social upliftment of the community



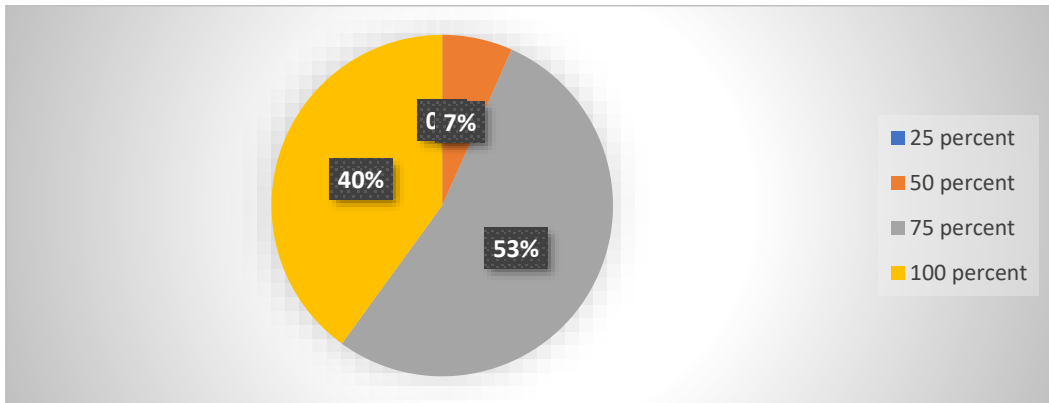
		No. of Respondent 23			
S.No.	Question	100%	75%	50%	25%
1	How far do you think that the course offered in the college is relevant to the needs of the day?	26%	35%	22%	17%
2	How far do you think that the course makes the students employable?	26%	43%	9%	22%
3	How far do you think that the course added value to your professional skills and life skills?	35%	31%	17%	17%
4	How far are you satisfied with the facilities and support system of college?	27%	27%	32%	14%
5	How far do you think that the college contributes to social upliftment of the community?	29%	29%	33%	9%

Suggestions I feel that apart from Kho-Kho, Kabaddi and Cricket, many other games should also be organised in the college.

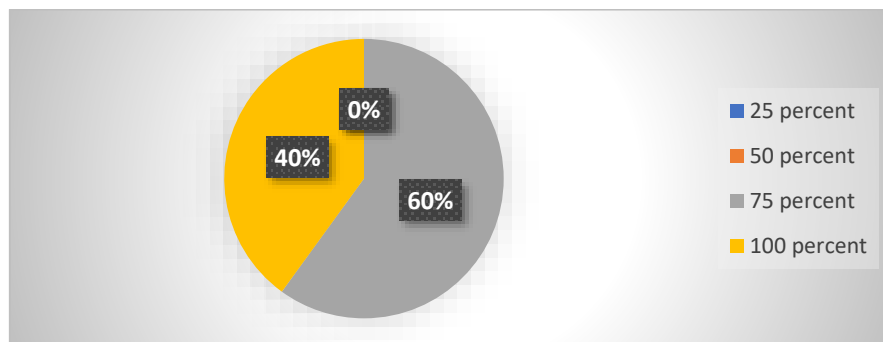
Parents/Other Stakeholders Feedback report

Session- (2023-24)

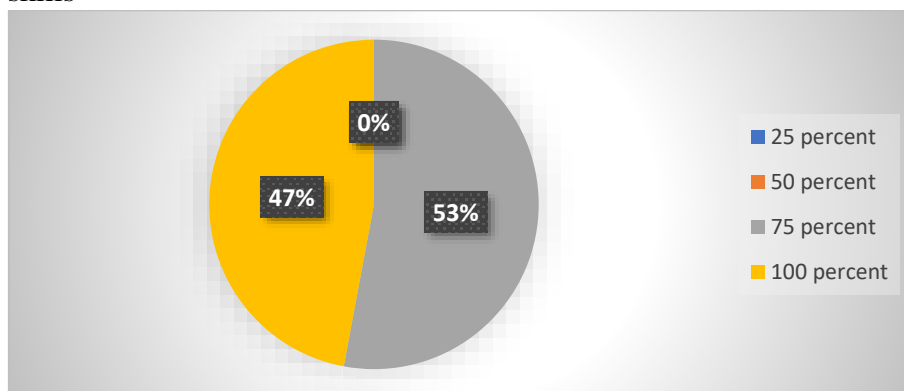
1- How far do you think that the course offered in the college is relevant to the needs of the day.



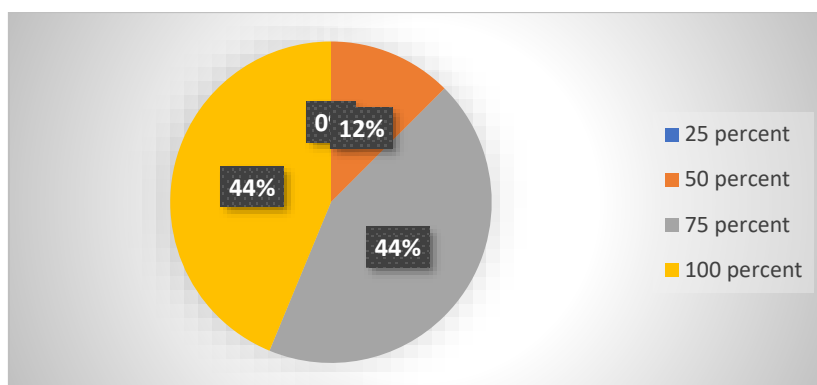
2- How far do you think that the course makes the students employable



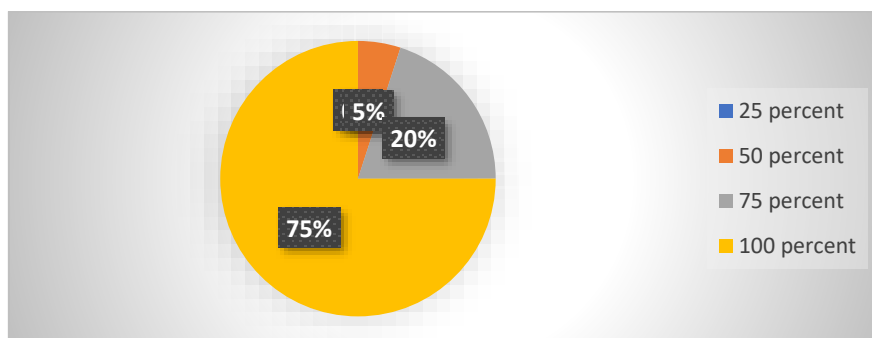
3- How far do you think that the course added value to your professional skills and life skills



4- How far are you satisfied with the facilities and support system of college



5- How far do you think that the college contributes to social upliftment of the community



		No. of Respondent 24			
S.No.	Question	100%	75%	50%	25%
1	How far do you think that the course offered in the college is relevant to the needs of the day?	40%	53%	7%	0%
2	How far do you think that the course makes the students employable?	40%	60%	0%	0%
3	How far do you think that the course added value professional skills and life skills?	47%	53%	0%	0%
4	How far are you satisfied with the facilities and support system of college?	44%	44%	12%	0%
5	How far do you think that the college contributes to social upliftment of the community?	75%	20%	5%	0%

PRINCEBAGI
Savitribha Chaudhri Singh Shakti
Government Post Graduate
College, Bagin, Supaul
Prof. B.C. Tiwari